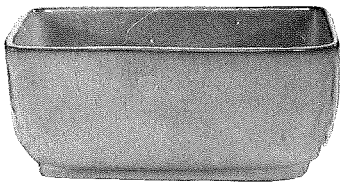


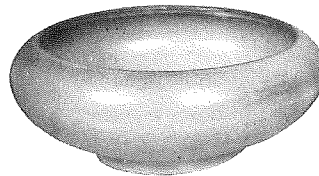
Appropriate Containers for Flower Arrangements and Planters



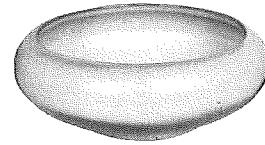
14—8" PLANTER



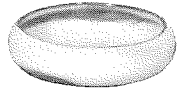
177—5½" SWIRL PLANTER



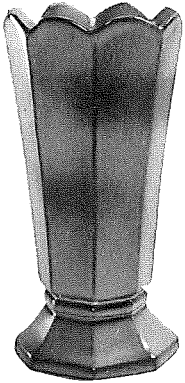
212—8" ROUND BOWL



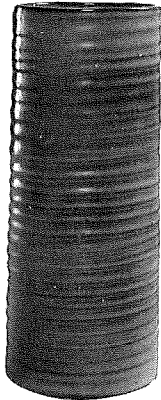
212-2—6½" ROUND BOWL



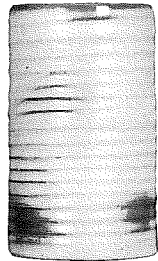
212-4- 5" ROUND BOWL -



64—9½" OCTAGONAL VASE



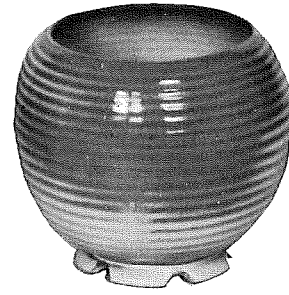
72—10" RINGED CYLINDER VASE



172—6½" RINGED CYLINDER VASE



272—4" RINGED CYLINDER VASE

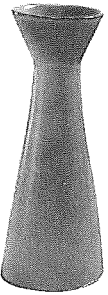


70-A—7" RINGED JARDINIERE



70-B—5½" RINGED JARDINIERE

BUD VASES



28—6½"



38—6"



22—7" FOOTED ROUND VASE



M2—6"—18 OZ. MUG

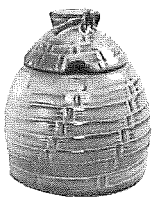


5M—5½"—16 OZ. MUG



4M—4½"—18 OZ. MUG

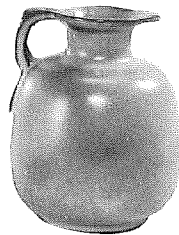
HONEY JUGS — SYRUP PITCHERS — FLOWER CONTAINERS



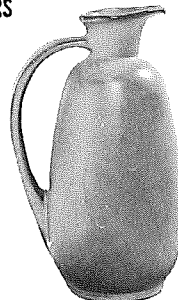
803—HONEY JAR W/LID



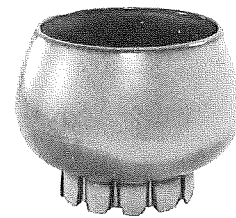
838—10 OZ. PITCHER



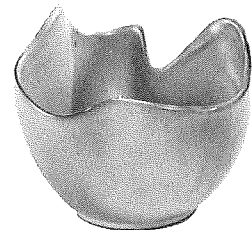
833—24 OZ. PITCHER



835—24 OZ. PITCHER



235—6" FLOWER ARRANGER



F29—6" DRAPERY VASE

"MUGS" for coffee, tea, milk, soup, soda. YOU NAME IT!



C1



C2



C3



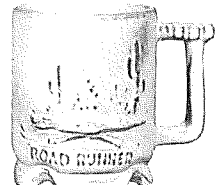
C5



C9



C18—SCISSORTAIL MUG



C19—ROAD RUNNER 12 OZ. MUG